

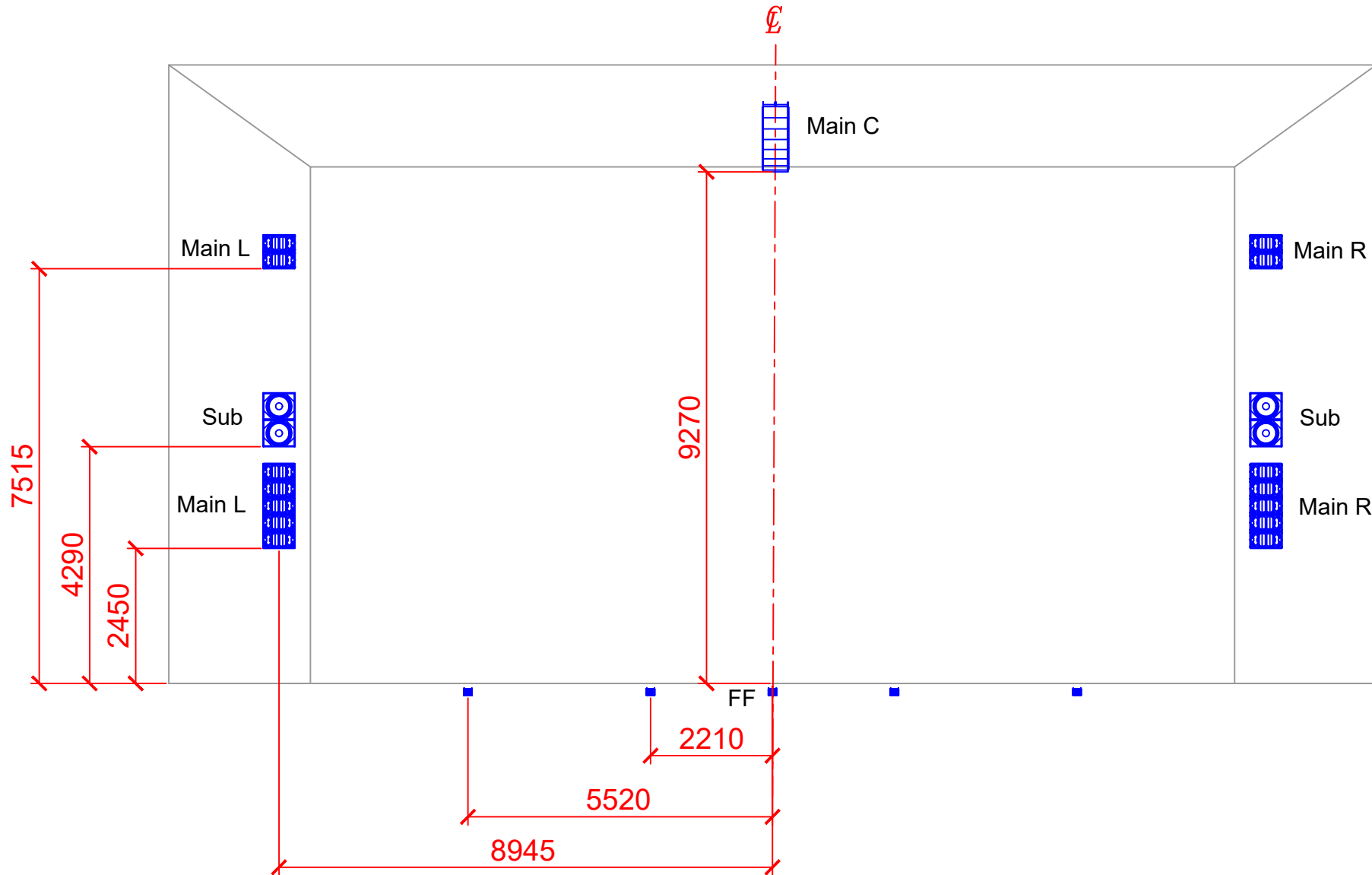


- LYRIC THEATRE -

PA Speaker Position

Venue Technical Department, HKAPA

2022



LEGEND 音箱設備



d&b T10 center array (Main C)
中央聲道揚聲器系統



d&b Qi1 Upper & Lower
main left & right (Main LR)
兩側的雙聲道揚聲器系統

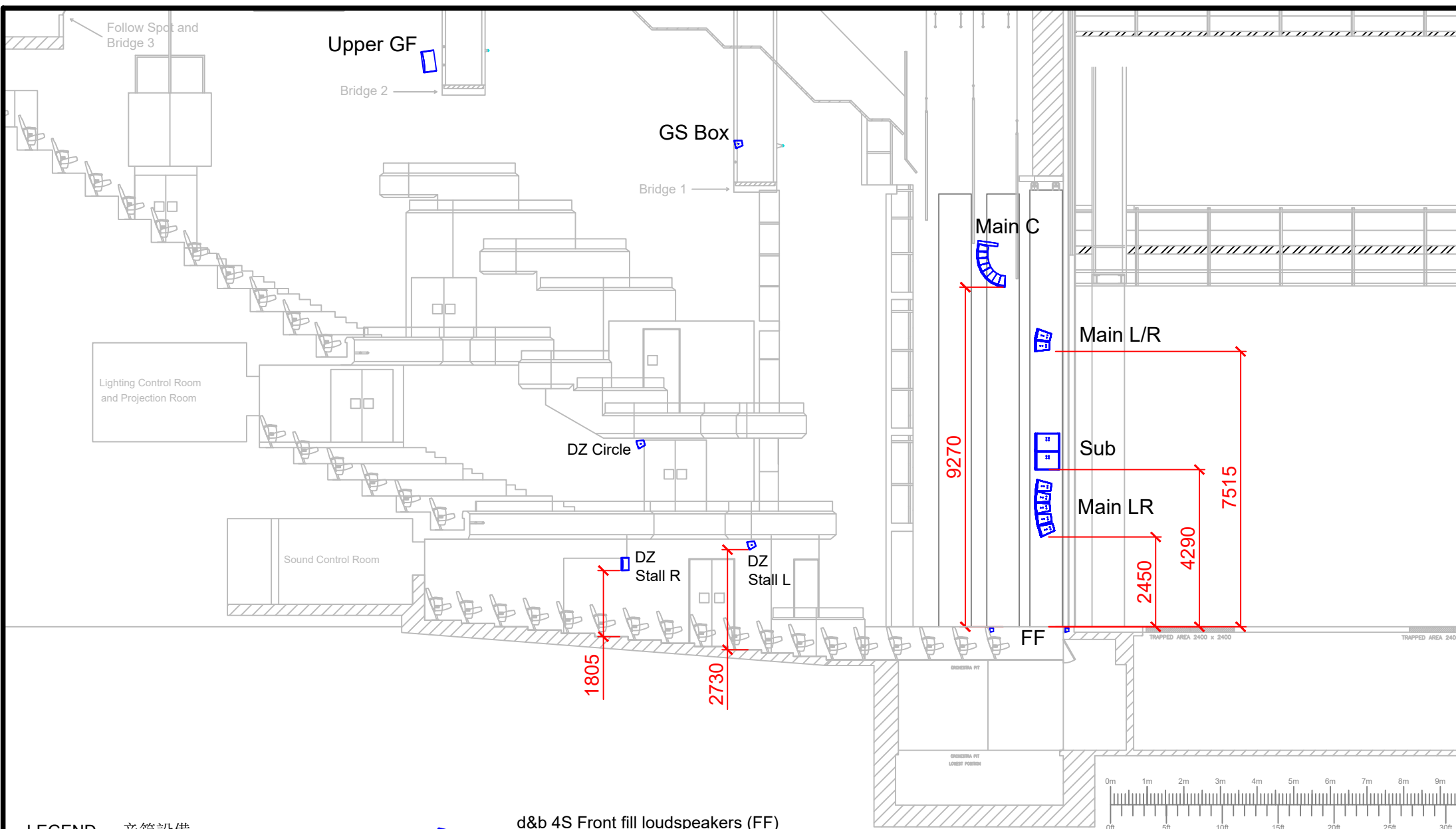


d&b Qi-SUB subwoofers (Sub)
兩側的雙聲道低頻揚聲器系統






d&b 4S Front fill loudspeakers (FF)
舞台唇補揚聲器系統

SCALE not in Scale	SIZE A4	PROJECT Lyric Speaker Project 2014
DATE : 01-05-2022	DRAWING TITLE	DWG NO. —
DRAWN : Soundworks 21-10-2014	Lyric Speaker Plan (Front)	
CHECKED : _D 00-00-2000		
APPROVED : _D 00-00-2000		
REVIEWED : _D 00-00-2000		
CHECKING LEVEL : _D		
ALL DIMENSIONS IN mm.		
		TEL: (852) 2584-8655 FAX: (852) 2584-8928 http://www.hkaps.edu/ 1 Gloucester Road, Wanchai, Hong Kong
		SHEET 01 OF 03 FILENAME Lyric Speaker Plan 2022
		REV 1



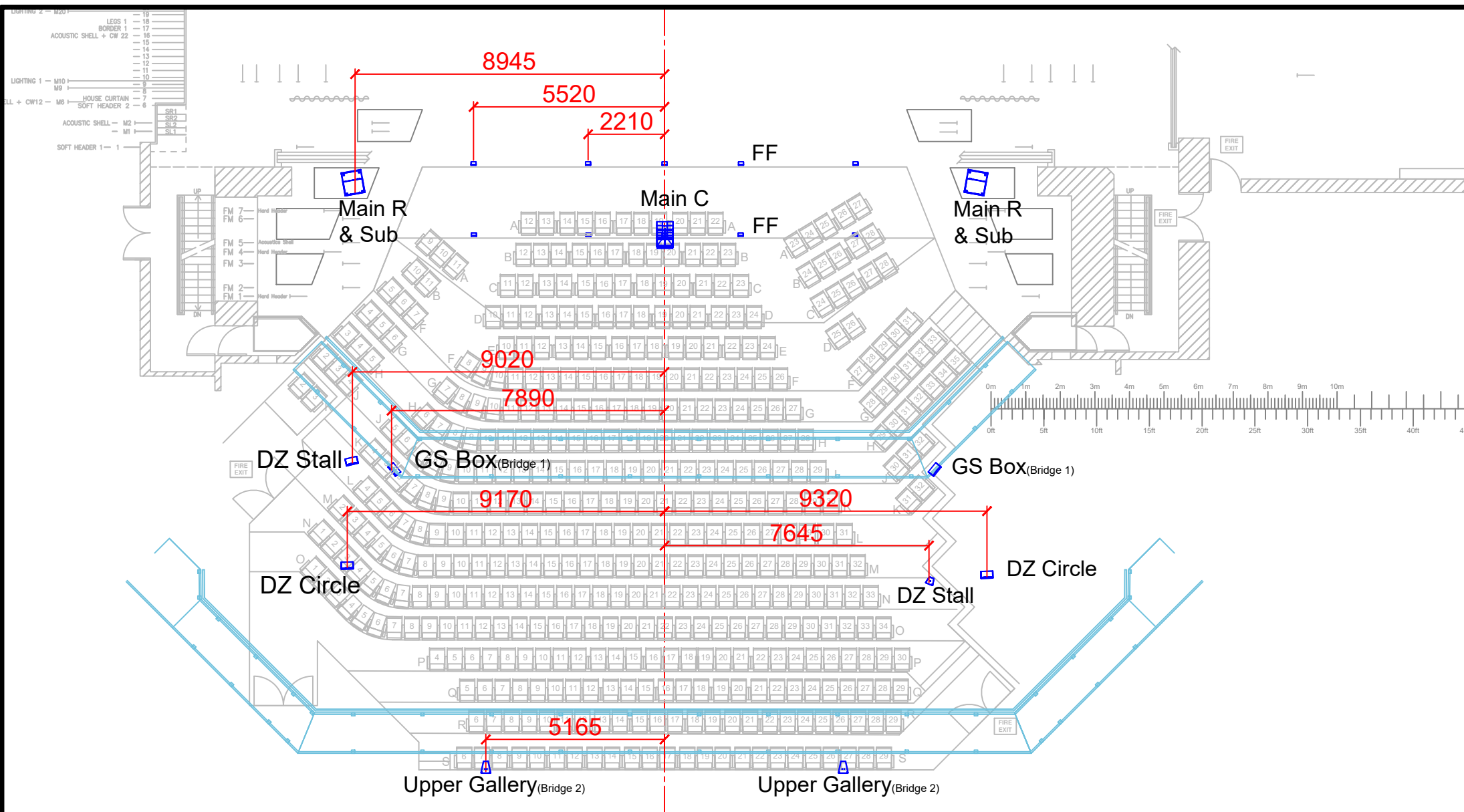
LEGEND

音箱設備

-  d&b T10 center array (Main C)
中央聲道揚聲器系統
-  d&b Qi1 Upper & Lower main left & right (Main LR)
兩側的雙聲道揚聲器系統
-  d&b Qi-SUB subwoofers (Sub)
兩側的雙聲道低頻揚聲器系統

-  d&b 4S Front fill loudspeakers (FF)
舞台唇補揚聲器系統
-  d&b 8S Stalls & Circle dead zone fill speakers (DF)
堂座及樓座補聲揚聲器系統
-  d&b 8S 3/F gallery side box fill speakers (GS Box)
高座補聲揚聲器系統
-  d&b 10S upper gallery fill speakers (Upper GF)
高座補聲揚聲器系統

SCALE not in Scale	SIZE A4	PROJECT Lyric Speaker Project 2014
DATE : 01-05-2022	DRAWN : Soundwork 21-10-2014	DWG NO. _____
CHECKED : _D 00-00-2000	APPROVED : _D 00-00-2000	Lyric Speaker Plan (Side)
REVIEWED : _D 00-00-2000	CHECKING LEVEL : _D	
ALL DIMENSIONS IN mm.		 The Hong Kong Academy of Performing Arts 香港演藝學院 Venues Technical Department
		TEL:(852) 2584-8655 FAX:(852) 2584-8928 http://www.hkapa.edu/
		SHEET 02 OF 03 FILENAME Lyric Speaker Plan 2022
		REV 1



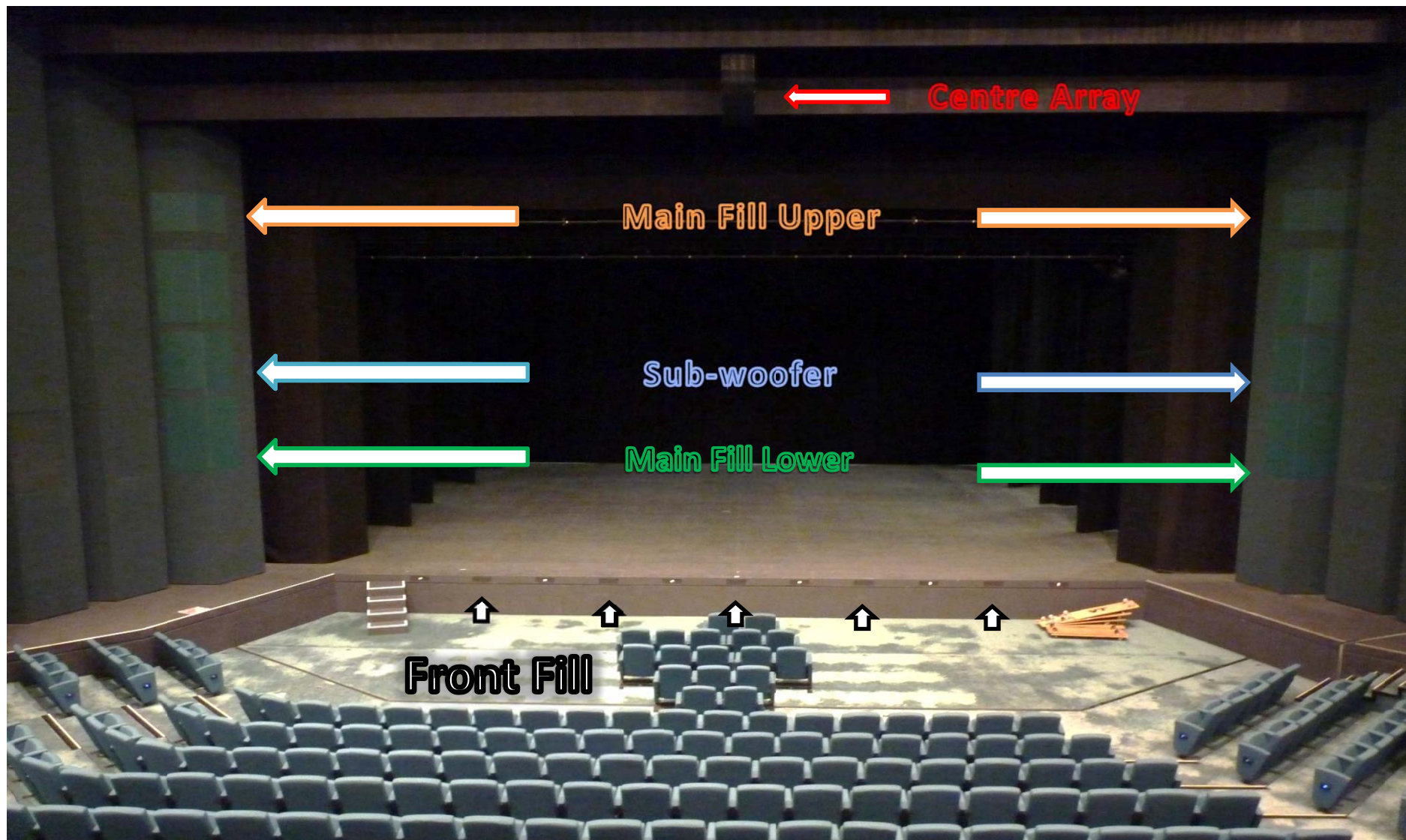
LIGHTING 2 - M20	19
LEGS 1	18
BORDER 1	17
ACOUSTIC SHELL + CW 22	16
	15
	14
	13
	12
	11
LIGHTING 1 - M10	10
M9 1	9
LL + CW12 - M8	8
HOUSE CURTAIN	7
SOFT HEADER 2	6
	5
	4
ACOUSTIC SHELL - M2	3
M1	2
SOFT HEADER 1 - 1	1

LEGEND 音箱設備

- d&b T10 center array (Main C)
中央聲道揚聲器系統
- d&b Qi1 Upper & Lower
main left & right (Main LR)
兩側的雙聲道揚聲器系統
- d&b Qi-SUB subwoofers (Sub)
兩側的雙聲道低頻揚聲器系統

- d&b 4S Front fill loudspeakers (FF)
舞台唇補揚聲器系統
- d&b 8S Stalls & Circle dead zone fill speakers (DF)
堂座及樓座補聲揚聲器系統
- d&b 8S 3/F gallery side box fill speakers (GS Box)
高座補聲揚聲器系統
- d&b 10S upper gallery fill speakers (Upper GF)
高座補聲揚聲器系統

SCALE not in Scale	SIZE A4	PROJECT Lyric Speaker Project 2014
DATE : 01-05-2022		DWG NO. _____
DRAWN : Soundworks 21-10-2014		
CHECKED : _D 00-00-2000		
APPROVED : _D 00-00-2000		
REVIEWED : _D 00-00-2000		
CHECKING LEVEL : _D		
ALL DIMENSIONS IN mm.		
		TEL:(852) 2584-8655 FAX:(852) 2584-8928 http://www.hkapa.edu/ Gloucester Road, Wanchai, Hong Kong
		SHEET 03 OF 03 FILENAME Lyric Speaker Plan 2022
		REV 1



Lyric Theatre, HKAPA – Centre Array, Main Fill Upper, Sub-woofer, Main Fill Lower and Front Fill