



**SAMPLE**

**School of Music**

**Entrance Test for**

**Bachelor of Music (Honours) & Diploma in Music Foundations**

**Aural Perception**

Name: \_\_\_\_\_

Major Study (i.e. Composition / Performance): \_\_\_\_\_

Specialisation (i.e. Instrument): \_\_\_\_\_

Application No.: \_\_\_\_\_

For Internal Use only

Mark: \_\_\_\_\_

**Part A** – Listen to excerpts 1-3. Write the correct answer in the boxes provided for questions 1-3. Each excerpt will be played **TWICE**. (10 marks)

1. Identify the interval played. (e.g. Perfect 4<sup>th</sup>, minor 6<sup>th</sup>, ...)

1.

2. Identify the quality of chords played. (e.g. Major, diminished,...)

2.

3. (a) Identify the cadences played. (e.g. Perfect, imperfect,...)

3(a).

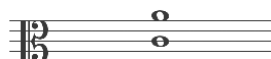
(b) Write down the two chords in the cadence with Roman numerals. Please also indicate the chord inversions. (e.g. I, iic,...)

3(b).



**Part B** – Listen to excerpts 4-7. Write the correct answer on the staff lines provided for questions 4-7. Each excerpt will be played **TWICE**. (12 marks)

4. Add the missing accidental ( # ♭ ♮ ) to the top note of the interval played.



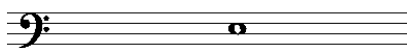
5. Add the missing accidental(s) to the chord played. The bass note will be played as written on the score.



6. Add the missing notes to the chord played, with the top note provided.







7. Add the missing notes to the chord played, with the bass note provided.



**Part C** – Listen to excerpts 8-10. Choose the correct answer and write the **LETTER** into the box given. Each recording will be played **ONCE**. (10 marks)

8. Excerpt 8. Identify the repeating rhythmic pattern of the theme in the excerpt.

A. 	B. 
C. 	D. 

8.

9. Excerpt 9

(a) Identify the repeating bass line in the excerpt.

A. 
B. 
C. 
D. 

9(a).

(b) Identify the type of voice in the excerpt.

A. Soprano      B. Alto      C. Tenor      D. Bass

9(b).

10. Excerpt 10

(a) Identify the time signature of the excerpt.

A.  $\frac{3}{4}$       B.  $\frac{4}{4}$       C.  $\frac{9}{8}$       D.  $\frac{12}{8}$

10(a).

(b) Identify the two instruments playing the main melodies.

A. Ruan & pipa      B. Erhu & yangqin  
C. Suona & sheng      D. Dizi & zheng

10(b).

**Part D** – Listen to excerpts 11-12. Choose the correct answer and write the **LETTER** into the box given. Each recording will be played **TWICE**. (4 marks)

11. Excerpt 11. Identify the interval between the 2 parts in the second phrase.

- A. 2<sup>nd</sup>                      B. 4<sup>th</sup>                      C. 5<sup>th</sup>                      D. 7<sup>th</sup>

11.

12. Excerpt 12. Choose the best description for the excerpt played.

- A. The themes of the first and second phrases are the same.  
 B. The themes of the second and fourth phrases are the same.  
 C. The texture of the second half of the excerpt is different from the first half.  
 D. All of the above.

12.

**Part E** – Listen to excerpt 13. Choose the correct answer and write the **LETTER** into the box given. Each recording will be played **FOUR TIMES**. (8 marks)

13. Excerpt 13

(a) Identify the largest interval between the lowest and highest notes in the first solo passage.

- A. 4<sup>th</sup>                      B. 5<sup>th</sup>                      C. 6<sup>th</sup>                      D. 8<sup>ve</sup>

13(a).

(b) Identify the two solo instruments in the excerpt.

- A. Trumpet and then trombone                      B. Flute and then French horn  
 C. Oboe and then bassoon                      D. Tuba and then timpani

13(b).

(c) Identify the tonality of the beginning and the end of the excerpt.

- A. Major then modulates to its Dominant Major.  
 B. Major then modulates to its Tonic Minor.  
 C. Minor then modulates to its Relative Major.  
 D. Minor then modulates to its Tonic Major.

13(c).

(d) Identify the cadence of the two phrases.

- A. Perfect                      B. Imperfect                      C. Plagal                      D. Interrupted

13(d).

**Part F** - Listen to excerpts 14-15 with the given scores. Follow the instructions to complete the questions below.

14. Excerpt 14 will be played **TWICE** at 1-minute interval. After the second playing, you will have 2 minutes to complete the answer.

- (a) For bars 1-4, circle the wrong written pitches on the original staff, and write the correct pitches on the Correction staff below your circled notes on the score below. (8marks)
- (b) For bars 5-10, circle the group of notes with wrong written rhythm on the original staff and write the correct rhythm on the correction staff below your circled group of notes. (14 marks)
- (c) Notate the repeating one-bar rhythmic pattern of the accompaniment part on the staff below. (2 marks)



(a)

Original

Correction

(b)

Orig.

Corr.

Orig.

Corr.

- (a) Complete the melody in bars 3-6 on the score below. (10 marks)
- (b) Add the bar lines and rhythmic notation to the given pitches from bar 10 on the score below. (12 marks)

1 2 3 4

5 6 7 8 9

10

16. Excerpt 16 will be played SIX TIMES at 1-minute interval. After the last playing, you will have 2 minutes to complete your answer.

- (a) Add the missing bottom notes above \* to complete the bass line. (5 marks)
- (b) Write the chord progression in Roman numerals at the given boxes. (e.g.  $V_4^6$ , iib, etc...)  
The music is in C major. (5 marks)

The image shows a musical score for a piano exercise. It consists of two systems of staves. The first system is labeled 'Piano' and the second system is labeled 'Pno.'. Both systems are in 4/4 time and have a key signature of two flats (Bb and Eb). The first system contains measures 1, 2, and 3. The second system contains measures 4, 5, and 6. Each measure has a treble and a bass staff. In measures 1 and 2, the piano part has a melody in the treble staff and a whole rest in the bass staff. In measure 3, the piano part has a melody in the treble staff and a half note in the bass staff. In measures 4, 5, and 6, the piano part has a melody in the treble staff and a bass line in the bass staff. There are empty boxes with an asterisk (\*) above them in measures 1, 2, 4, 5, and 6, indicating where to write notes.